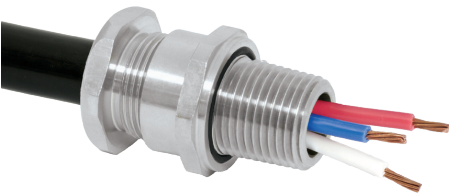


TC GLOBALLY APPROVED, HAZARDOUS (CLASSIFIED) LOCATION CABLE GLAND



FOR ALL TYPES OF UNARMORED TRAY CABLES, FLEXIBLE CABLES & CORD

- Aluminum, nickel plated brass or stainless steel design
- Increased cable range with removable insert
- Optional thread sizes
- -60°C to +110°C (-76°F to +230°F)
- Globally marked, cCSAus, IECEx, ATEX and UKEX
- Heavy duty design
- O-ring face seal as standard



GLOBAL PRODUCT CERTIFICATION			
ATEX CERTIFICATE	CML18ATEX1334X	IECEx CERTIFICATE	IECEx CML 18.0191X
UKEX CERTIFICATE	CML 21UKEX1260X		
CODE OF PROTECTION	II 2G 1D, Ex db IIC Gb, Ex eb IIC Gb, Ex ta IIIC Da	CODE OF PROTECTION	Ex db IIC Gb, Ex eb IIC Gb, Ex ta IIIC Da
COMPLIANCE STANDARDS	EN 60079-0,1,7,31	COMPLIANCE STANDARDS	IEC 60079-0,1,7,31
cCSAus CERTIFICATE	2220601		
CSAus CODE OF PROTECTION	Class II, Div. 2, Groups E,F, and G; Class III, Div. 2; Encl. Type 4X; Ex e; Class I, Zone 1, AEx e		
CCSA CODE OF PROTECTION	Class I, Div. 2, Groups A,B,C, and D; Class II, Div. 2, Groups E, F, and G; Class III, Div. 2; Encl. Type 4X; Ex e; Class I, Zone 1, AEx e, Ex e		
COMPLIANCE STANDARDS	CAN/CSA-C22.2 No 0-M91,18.3-04,174-M1984, 94-M91, CAN/CSA-E60079-0,7, CAN/CSA-E61241-1-1, ANSI/UL 514B, ANSI/UL 50, ANSI/UL 60079-0,7		
ECAS CERTIFICATE	20-02-05627	Ukr SEPRO CERTIFICATE	CL19.0371X
RETIE APPROVAL NUMBER	03866		
CCC CERTIFICATE	2020322313003408		
MARINE APPROVALS	LRS: 01/00172, DNV: TAE000000Y, ABS: 20-2022051-PDA, BV: 43180		

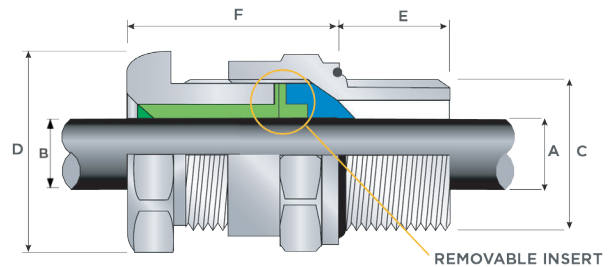
TECHNICAL CLASSIFICATION	
DESIGN SPECIFICATION	BS 612:Part 1:1989, IEC 62444, EN 62444
MECHANICAL CLASSIFICATION*	Impact = Level 8, Cable Anchorage = Type B
ENCLOSURE PROTECTION	IK10 to IEC 62262 (20 joules) Brass & Stainless Steel only
INGRESS PROTECTION RATING**	IP66, IP67 and IP68****
NEMA RATING**	Type 4X
CABLE GLAND MATERIAL	Copper Free (<0.4%) Aluminum, Nickel Plated Brass, Stainless Steel
CABLE TYPE	Tray Cable and Cords, Unarmored / Braid (IEC)s
SEALING TECHNIQUE	Displacement Seal with Removable Insert
SEALING AREA	Cable Outer Jacket

* Mechanical & Electrical Classifications applied as per IEC 62444 & EN 62444

**** IP68 tested to a minimum depth of 30 metres for 12 hours, alternative depths / durations can be provided upon request



PATENT GRANTED: US 8440919



EUTEX ORDER REFERENCE (NPT)			ENTRY THREAD 'C'		MINIMUM THREAD LENGTH 'E'	CABLE RANGE 'A'				ACROSS FLATS 'D'	ACROSS CORNERS 'D'	NOMINAL ASSEMBLY LENGTH 'F'	SHROUD	APPROX WEIGHT ALUMINUM (oz)
ALUMINUM	NICKEL PLATED BRASS	STAINLESS STEEL	NPT	NPT OPTION		INSERT		NO INSERT		MAX	MAX			
						MIN	MAX	MIN	MAX					
TC-050A028	TC-050NB028	TC-050SS028	1/2"	-	0.78					1.20	1.32	1.20	P VC06	1.94
TC-075A028	TC-075NB028	TC-075SS028	-	3/8"	0.80	0.13	0.28	-	-	1.48	1.63	1.24	P VC09	1.69
TC-050A055	TC-050NB055	TC-050SS055	1/2"	-	0.78					1.20	1.32	1.20	P VC06	1.94
TC-075A055	TC-075NB055	TC-075SS055	-	3/8"	0.80	0.26	0.41	0.41	0.55	1.48	1.63	1.24	P VC09	1.69
TC-075A079	TC-075NB079	TC-075SS079	3/4"	-	0.80					1.48	1.63	1.24	P VC09	1.69
TC-100A079	TC-100NB079	TC-100SS079	-	1"	0.98	0.44	0.61	0.61	0.79	1.81	1.99	1.65	PVC11	3.17
TC-100A104	TC-100NB104	TC-100SS104	1"	-	0.98					1.81	1.99		PVC11	
TC-125A104	TC-125NB104	TC-125SS104	-	1 1/4"	1.01	0.67	0.85	0.85	1.04	2.05	2.25	1.65	PVC13	3.88
TC-125A127	TC-125NB127	TC-125SS127	1 1/4"	-	1.01					2.05	2.25	1.65	PVC13	4.94
TC-150A127	TC-150NB127	TC-150SS127	-	1 1/2"	1.03					2.36	2.60		PVC18	
TC-150A150	TC-150NB150	TC-150SS150	1 1/2"	-	1.03	0.93	1.10	1.10	1.27	2.36	2.60	1.65	PVC18	4.94
TC-200A150	TC-200NB150	TC-200SS150	-	2"	1.06					2.95	3.25	1.65	PVC23	6.00
TC-200A174	TC-200NB174	TC-200SS174	2"	-	1.06			1.40	1.74	2.76	3.03	1.63	PVC21	8.64
TC-250A174	TC-250NB174	TC-250SS174	-	2 1/2"	1.57					3.54	3.90		PVC27	
TC-200A197	TC-200NB197	TC-200SS197	2"	-	1.06			1.63	1.97	2.76	3.03	1.74	PVC21	8.29
TC-250A197	TC-250NB197	TC-250SS197	-	2 1/2"	1.57					3.54	3.90		PVC27	
TC-250A220	TC-250NB220	TC-250SS220	2 1/2"	-	1.57			1.86	2.20	3.54	3.90	1.74	PVC27	13.58
TC-300A220	TC-300NB220	TC-300SS220	-	3"	1.63					4.33	4.77		PVC31	
TC-250A244	TC-250NB244	TC-250SS244	2 1/2"	-	1.57			2.13	2.44	3.54	3.90	1.79	PVC28	13.58
TC-300A244	TC-300NB244	TC-300SS244	-	3"	1.63					4.33	4.77		PVC31	
TC-300A268	TC-300NB268	TC-300SS268	3"	-	1.63			2.41	2.68	4.33	4.77	1.79	PVC31	23.63
TC-350A268	TC-350NB268	TC-350SS268	-	3 1/2"	1.69					4.84	5.33		LSF32	
TC-350A315	TC-350NB315	TC-350SS315	3 1/2"	-	1.69			2.62	3.15	4.84	5.33	2.50	LSF32	34.22
TC-400A315	TC-400NB315	TC-400SS315	-	4"	1.73					5.25	5.78		LSF33	
TC-400A354	TC-400NB354	TC-400SS354	4"	-	1.73			2.99	3.54	5.25	5.78	2.36	LSF34	38.80

Order code example: TC-050A028 - 'TC' (Type Gland) - '050' (1/2" NPT Thread) - 'A' (Material Aluminum) - '028' (Max Cable Diameter 0.28")

Dimensions are displayed in inches unless otherwise stated